

MOST BEAUTIFUL
PLACES
IN
LUDWIGSHAFEN

SIGHTS

by a walk, by bike or by car



Lutherturm

Wilhelm-Hack-Museum

Berliner Straße 23
67059 Ludwigshafen



VRN-Bus-Stop/Tram:
Pfalzbau/Wilhelm-Hack-Museum



www.wilhelmhack.museum



WILHELM-HACK-MUSEUM

The Wilhelm Hack Museum is the most important museum for 20th and 21st century art in the Rhineland-Palatinate region. The dimensions of the ceramic wall on the outer façade, designed by the Spanish artist Joan Miró, are impressive. The museum was founded with a legacy donated in 1971 by the Cologne businessman, Wilhelm Hack. The museum's diverse collection consists of roughly 10,000 works.

OPENING HOURS*

Tuesday, Wednesday and Friday: 11 a.m. to 6 p.m.

Thursday: 11 a.m. to 8 p.m.

Saturday and Sunday: 10 a.m. to 6 p.m.



HACK-MUSEUMSGARTEN

The hackmuseumsgARTen urban gardening project is a garden open to the public just next to the museum. Useful, crop and ornamental plants are cultivated in specifically designed boxes and recycled containers, and citizens and many different institutions and associations are able to bring the diversity of nature right into the centre of Ludwigshafen on this varied terrain. An inviting place for meetings and exchanges!

Hack-Museumsgarten

Berliner Straße 23
67059 Ludwigshafen



VRN-Bus-Stop/Tram:
Pfalzbau/Wilhelm-Hack-Museum



www.facebook.com/Hackgarten/



OPENING HOURS*

Daily from 7 a.m. to 6 p.m., Thursday until 8 p.m.

Ernst-Bloch-Zentrum

Walzmühlstraße 63
67061 Ludwigshafen



VRN-Bus-Stop:
Walzmühle



www.bloch.de



ERNST-BLOCH-ZENTRUM

The Ernst Bloch Zentrum (centre) has been located in the former director's villa of the Walzmühle since 2000. The institution houses an exhibition and archive of scholarly works by the philosopher Ernst Bloch, who was born in Ludwigshafen in 1885. Bloch's study in Tübingen is presented in an unusual way, and is accessible via a glass ceiling. The Ernst Bloch Zentrum focuses on thoughts on utopias, future questions and on the critical issues of our time.

OPENING HOURS*

Tuesday and Wednesday: 2 a.m. to 5 p.m.

Thursday: 2 p.m. to 8 p.m. and by arrangement



WALZMÜHLE

The “Walzmühle” or roller mill was one of the largest and most technically advanced grain and feed mills in Europe. The two buildings that exist today were built in 1906 based on a design by the master builder for the district of Ludwigshafen, Adolf Lipps. In the 1990s, this striking Ludwigshafen landmark was extensively converted and renovated as part of a monument preservation project, and now houses office space.



Walzmühle


Rheinuferstraße 9
67061 Ludwigshafen



VRN-Bus-Stop:
Walzmühle



Schillerhaus
Schillerstraße 6
67071 Ludwigshafen

 VRN-Bus-Stop/Tram:
Hans-Warsch-Platz

 www.ludwigshafen.de/lebenswert/stadt-am-rhein/stadtgeschichte/schillerhaus/



SCHILLERHAUS

The property had been an inn with guest rooms since the 18th century called the „Viehhof“. Friedrich Schiller lived in his house, where he wrote the first version of „Fiesco“. Schiller's House also has an exhibition of the first editions and manuscripts of this famous writer. The exhibition provides information about the history of the district, which is rich in tradition, and the famous Frankenthal porcelain which was used in the residence of Princess Elisabeth Auguste in Oggersheim.




OPENING HOURS*

Wednesday: 10 a.m. to 12 a.m. and 2 p.m. to 6 p.m.
Friday: 2 p.m. to 5 p.m. and by arrangement
Closed during school vacations



Wallfahrtskirche Mariä Himmelfahrt
Kapellengasse 8
67071 Ludwigshafen

VRN-Bus-Stop/Tram: 
Mannheimer Tor

www.wallfahrtskirche-maria-himmelfahrt.de 




WALLFAHRTSKIRCHE MARIÄ-HIMMELFAHRT


This Catholic pilgrimage church in the castle district of Oggersheim was built between 1774 and 1777 in the Baroque style over the Loreto Chapel, which was constructed between 1729 and 1733. Electress Elisabeth Auguste commissioned the church to be built around the chapel based on plans by Peter Anton von Verschaffelt, a prominent sculptor of early Classicism. As an example of courtly representative architecture, the church is a historical monument, and one with a prominent place in art history.

OPENING HOURS*

Monday, Tuesday, Thursday and Friday: 9 a.m. to 12 a.m. and 3.30 p.m. to 5.30 p.m.

BASF Besucherzentrum
Carl-Bosch-Straße 38 (Tor2)
67063 Ludwigshafen

 VRN-Bus-Stop/Tram:
BASF

 www.besucherzentrum.basf.de



BASF VISITOR CENTER

Visitors can find out some interesting and fascinating facts about the world of chemistry and the history and significance of BASF over an area of 2,000 square meters on five levels. The modern visitor centre was inaugurated in 2007.

OPENING HOURS*


Monday to Friday: 9 a.m. to 5 p.m.



BASF-ARBEITERSIEDLUNG

The uniform brick buildings are arranged in neat rows right in front of the BASF headquarters. And yet each house bears the individual hallmark of its residents. The whole neighbourhood extends over several streets, with a total of 66 individual buildings with different architectural styles along both sides of the Leuschnerstraße. The houses are designated for foremen, supervisors and workers' houses.

BASF-Arbeitersiedlung
1.-4. Gartenweg
67063 Ludwigshafen

VRN-Bus-Stop: 
Feierabendhaus



Pegeluhr

An der Kammerschleuse 1
67061 Ludwigshafen



VRN-Bus-Stop:
Pegeluhr: Böcklinstraße oder Parkinsel
Stadtpark: Schwanthalerplatz



STADTPARK / PEGELUHR

Stadtpark: Created in 1900, this is the oldest park in the city, the 28-hectare park delights visitors with the landscape formed from the original floodplain forest vegetation, meadows and a promenade along the banks of the Rhine. The annual festival of German film is a very special attraction in the middle of this unique landscape.



Pegeluhr: The architecturally striking water level tower was built in c. 1900 based on plans designed by the royal road and river construction office just next to the former

chamber lock. This measuring device for determining the water level of the Rhine is intact and in working order.

Lutherturm

Maxstraße 33
67059 Ludwigshafen



VRN-Bus-Stop/Tram:
Pfalzbau/Wilhelm-Hack-Museum

www.amlutherplatz.de




LUTHERTURM

As the oldest church building in the city centre, the Protestant Lutheran church was built in 1858-62 and designed in the neo-Gothic style by the Munich architect, August von Voit. A large part of the building was destroyed in 1945 during the war, and only the east façade of the building with the central tower survived. The Lutherturm (Luther's tower) Lutherplatz and the Lutherbrunnen (Luther's well), with richly adorned by the artist Gernot Rumpf, create an environment that serves as a meeting place with cultural events and an Italian restaurant.



Ebertpark
Erzbergerstraße
67063 Ludwigshafen

 VRN-Bus-Stop/Tram:
Fichtestraße



EBERTPARK

The Ebertpark was founded with the opening of the South German Horticultural Show in May 1925, named after the then President of the German Republic, Friedrich Ebert. The elegant landmark in this park, covering 29 hectares, is the geometrically designed area around the main entrance on Erzbergstraße with flowerbeds, fountains and an architecturally attractive tower restaurant.




Ebertsiedlung: This settlement was considered the pinnacle of residential luxury in the 1920s, and therefore a leader in the whole of Germany with its own district heating plant for heating and hot water, a central laundry with washing machines, a kindergarten, ornamental courtyards


for recreation, a broadcasting station and a police station. Today, the roughly 700 apartments in the complex have been extensively renovated and modernised.

FRIEDRICH-EBERT-HALLE

The Friedrich-Ebert-Halle, opened in 1965, is unique in terms of architecture with its sail-shaped roof construction in the form of a „hyperbolic paraboloid“. This multifunctional hall, steeped in tradition, is now used for sporting events, including Bundesliga handball by the Ludwigshafen Owls, and also for trade fairs, music and entertainment events.

Friedrich-Ebert-Halle
Erzbergerstraße 89
67063 Ludwigshafen

VRN-Bus-Stop/Tram: 
Schwalbenweg

www.ludwigshafen-eberthalle.de 



Starting point

Parkplatz Wildpark
Neuhöferstraße 48
67067 Ludwigshafen

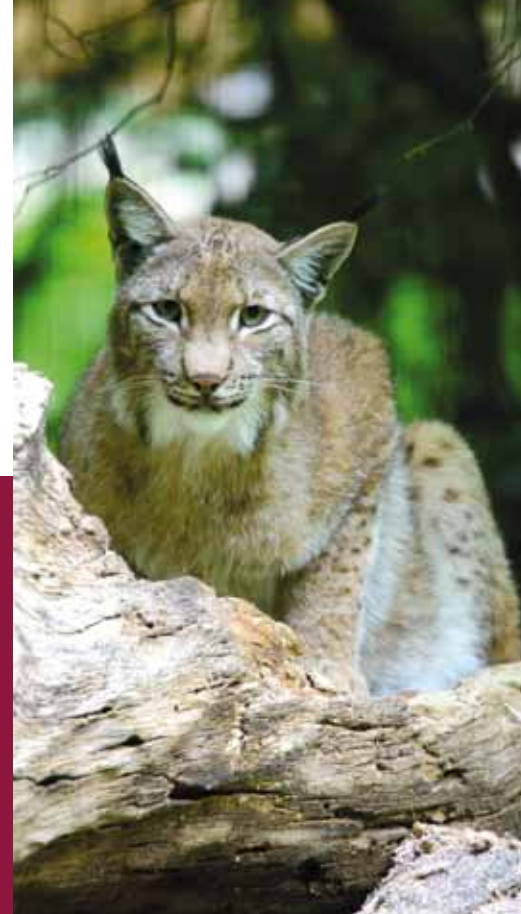


VRN-Bus-Stop:
Wildpark



REHBACHTAL

A floodplain forest surrounds the natural stream in the Rehbachtal (valley). The landscape conservation area covers an area of roughly 35 hectares, and is home to a great diversity of species. It is located on the southern border of the city area between the Ludwigshafen district of Rheingönheim and the neighbouring village of Neuhofer. The Rehbach rises in the Palatinate Forest and flows into the Rhine near Rheingönheim.



Wildpark

Neuhöferstraße 48
67067 Ludwigshafen



VRN-Bus-Stop:
Wildpark

www.ludwigshafen.de/lebenswert/freizeit/wildpark/



WILDPARK

The Ludwigshafen-Rheingönheim wildlife park in the south of the city of Ludwigshafen enables visitors to observe the native natural species and environment up close. The 30-hectare floodplain forest is home to over 200 animals from 30 European wild and game species. Free-roaming animals can be experienced at close quarters. Hiking trails lead visitors to large animal enclosures of among others, aurochs, wild boar, bison and lynx. Boisterous goats and small animals can be seen frolicking in the petting zoo.

OPENING HOURS*

Monday to Sunday: 9 a.m. to 7 p.m.

Bike tours

along the Rhine Bicycle Route:



www.lukom.com/tourismus/radfreizeit/
www.lukom.com/tourismus/radurlaub/



RHEINRADWEG

In Ludwigshafen, the international Rhine Cycle Route largely leads through extensive natural landscapes: The Maudacher Bruch runs 360 hectares along a silted-up loop of the Altrhein (old Rhine), and is the largest continuous natural area in the city. A 30-km network of paths runs through this park forest, connecting the districts of Oggersheim, Gartenstadt and Maudach.



In the north of Ludwigshafen, the route passes the Frankenthal Canal, a cultural monument to the last remaining section of a former Rhine connection from Frankenthal. A prominent natural monument is a pear tree with a trunk

circumference of 2.60 metres, which is approx. 140 years old. The route crosses the Rehbachtal landscape conservation area in the south.

MURALU/STREET ART

www.wilhelmhack.museum/de/museum/muralu

Muralu is a street art project organised by the Wilhelm-Hack-Museum. Beside regional and national street artists, prominent international figures, including Augustine Kofie and Limov, have created designs for the inner-city walls. An ensemble of works by various artists can be contemplated in the former rose garden in the Ebertpark.



A gallery of artists was created as a Deutsche Bahn (German railway) project in the network of subways in the main

railway station of Ludwigshafen independently of Muralu.

VRN-Bus-Stops:



Rhein-Galerie

Berliner Platz

Pegeluhr: Böcklinstraße, Parkinsel



RHEINWALK

The Rhein Walk along the banks of the Rhine between Rhein-Galerie and Parkinsel, has six stations with information boards which provide some fascinating insights into the history, specific features and development of the city on the Rhine. The project is a living tribute to the city's historically close links with the Rhine, and provides information about the Pegeluhr water level clock, the history of the „Mundenheimer Wäldchen“ woods, and explains the origins of the anchor stone.



*You can find current opening hours of the facilities on the specific homepage.

**You can find more information about the sights on www.lukom.com.

The Tourist Information is located right in the middle of downtown Ludwigshafen at Berliner Platz 1. Train Station Ludwigshafen-Mitte, the central station of public transport Berliner Platz and the car park Walzmühle are in its immediate neighbourhood. You will find there a huge variety of information materials about sights in the region around Ludwigshafen.

CONTACT

Tourist-Information
Ludwigshafen

Berliner Platz 1, 67059 Ludwigshafen
Telefon: 0621 51 20 -35 oder -36
Fax: 0621 62 42 95

E-Mail: tourist-info@lukom.com
www.lukom.com

lukom

Ludwigshafener Kongress- und
Marketing-Gesellschaft mbH

Photos:
Ralph Beetz, Torsten Kleb, Markus Lemberger, Stadt Ludwigshafen, Ilona Schäfer